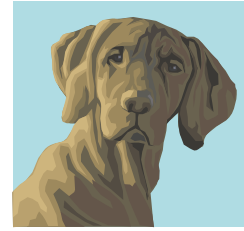


## South Lytchett Manor Caravan and Camping Park

---



Dear Guest,

Thank you for coming to stay with me at South Lytchett Manor Caravan and Camping Park.

I have lived here for just over a year now with my owners, Dane and Chris.

Firstly, we are very relaxed here but my owners have asked me to remind your owners of a few simple rules:

- We must be kept on a lead at all times when we are on the park.
- We can go off the lead in the Dog Walk around the pond - great for getting muddy and wet!
- If you do a poo, you must get your owner to clean up after you. Remember children play in these areas.
- Poo bags can be placed in the normal rubbish bins in Poole
- We are not allowed in the children's play area.
- No barking, fighting, smoking or gambling.
- Don't play with my toys - or else!

If you are not feeling very well then there is a lovely vet, just over the flyover, in Upton (0.5 miles). Tel: 01202 624140. There is also a 24 hour service available.

A great place to visit is Saint Peter's Finger Pub (about a 10 minute walk). You get a lovely bowl of water. Your owners can have a meal and a quiet drink while you relax.

If you need a long walk, like me, then the nearest place is Wareham Forest (about 1.5 miles by car in Organford. Park next to the Bridge/Ford ) where you can run off the lead, and enjoy and really good mooch about.

The nearest beach is Hamworthy Park (about 2 miles by car). This is just a great place to meet friends, play ball and swim in the sea.

I have put some other information on the back which you might find useful.

Love,

Lara XXX